



# Submission Guide

---

BUILDINGSMART INTERNATIONAL OPENBIM AWARDS

## CONTENTS

WELCOME .....	2
OVERVIEW .....	3
WEBSITE .....	3
AWARD CATEGORIES .....	4
CORE REQUIREMENTS .....	5
SHARING & CONFIDENTIALITY AGREEMENTS .....	5
KEY DATES .....	6
COMPLETING AN ENTRY .....	6
TAILORED CATEGORY APPROACH .....	7
SOFTWARE ECOSYSTEM .....	7
PROCESS MAPS .....	7
ADDITIONAL EVIDENCE .....	7
IFC FILE VIEWER FOR JURY REVIEW .....	7
BSI VALIDATION SERVICE .....	9
USE CASES .....	10
VIEWS AVAILABLE OF PAST ENTRIES .....	10
PLAGIARISM .....	10
RESUBMISSION OF PAST PROJECTS .....	10
JURY PROCESS .....	11
FINALISTS .....	11
AWARDS CEREMONY .....	11
CONTACT .....	11
FREQUENTLY ASKED QUESTIONS .....	11
OPT-IN TO BSI NEWS .....	11
APPENDIX A: MESSAGE TO APPLICANTS .....	12
APPENDIX B: AWARD CATEGORY DEFINITIONS .....	13
APPENDIX C: SAMPLE ATTACHMENT FILES .....	14

## WELCOME

Welcome to the buildingSMART International openBIM Awards for 2025. I am delighted to share this submission guide providing all the essential information you need in order to prepare for and execute your submission for this year's openBIM Awards Program.



### What's New in 2025?

- Re-launched homepage for the openBIM Awards Program: <https://www.buildingsmart.org/openbim-awards-program/>
- New archive of past Award winners and special mentions: <https://www.buildingsmart.org/past-openbim-awards/>
- The merging of three categories (Asset Management, Facilities Management, and Handover) into one single category of 'Operations'

### User Experience and Award Force Platform

The Award Force platform ensures consistency and ease of use. Focus on what truly matters: showcasing excellence in your use of **openBIM**.

### Best of Luck!

On behalf of the entire awards program team, we wish you the best of luck and success with your submission.

Sincerely,

A handwritten signature in black ink, appearing to read "Dan Little".

Dan Little

### Program Manager

buildingSMART International openBIM Awards

## OVERVIEW

The buildingSMART International openBIM Awards honours exemplary demonstrations of **openBIM** best practice or innovation excellence within project delivery, operations, research projects, technology solutions development, and sustainable outcomes in the built asset industry. Entries are judged on how effectively and innovatively they have used openBIM to overcome interoperability and open information exchange challenges.



## WEBSITE

### [The openBIM Awards Program](#)

buildingSMART International's website for the openBIM Awards is the homepage for all awards information and includes access to Award Force - the platform used for both submitting and judging projects. You can also review past winners, finalists, and special mentions.

Also, be sure to review [APPENDIX A: MESSAGE TO APPLICANTS](#) at the end of this document for more details about the program.

## AWARD CATEGORIES

There are 8 award categories that can be submitted into for the 2025 season. Entries from all categories can also be considered for the Sustainability Excellence award by completing the 'Sustainability' tab in the submission form.



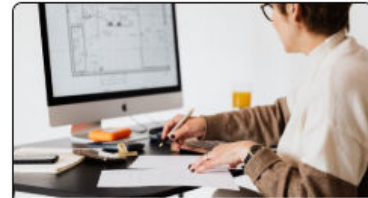
### Construction for Buildings

Projects that exemplify the effective use of openBIM during the construction phase of building projects.



### Construction for Infrastructure

Projects demonstrating the successful implementation of openBIM in the construction phase of infrastructure projects.



### Design for Buildings

Projects showcasing exceptional use of openBIM during the design phase of building projects.



### Design for Infrastructure

Projects highlighting innovative application of openBIM in the design phase of infrastructure projects.



### Operations

Projects that excel in using openBIM for the handover, facilities management, and/or asset management during the operations phase.



### Professional Research

Research led by academic, industry, or government professionals that contributes to the advancement of openBIM.



### Student Research

Research conducted by students that explores innovative applications of openBIM.



### Sustainability Excellence

Projects that achieve better social, environmental, and economic outcomes through the use of openBIM.



### Technology

Applied technology solutions developed using buildingSMART schemas that enhance interoperability and data workflows.

Refer to the website or [APPENDIX B: AWARD CATEGORY DEFINITIONS](#) for detailed definitions and expectations per category. If you are not sure in which category your submission belongs, you can reach out to [awards@buildingsmart.org](mailto:awards@buildingsmart.org) to ask for advice.

Additionally, the international jury, program management, and bSI Executives may, at their discretion, nominate submissions for special mentions or additional awards. These additional awards and special mentions are to recognize submissions of high merit that deserve recognition by the buildingSMART community and may cover areas of achievement such as, but not limited to, Small-and Medium-Sized Enterprise Excellence, BIM + GIS Excellence, Innovation Excellence, Leadership Excellence, Business Value Demonstration Excellence, or Use Case Excellence.

## CORE REQUIREMENTS

Satisfying the following core requirements is necessary to advance to the judging round:

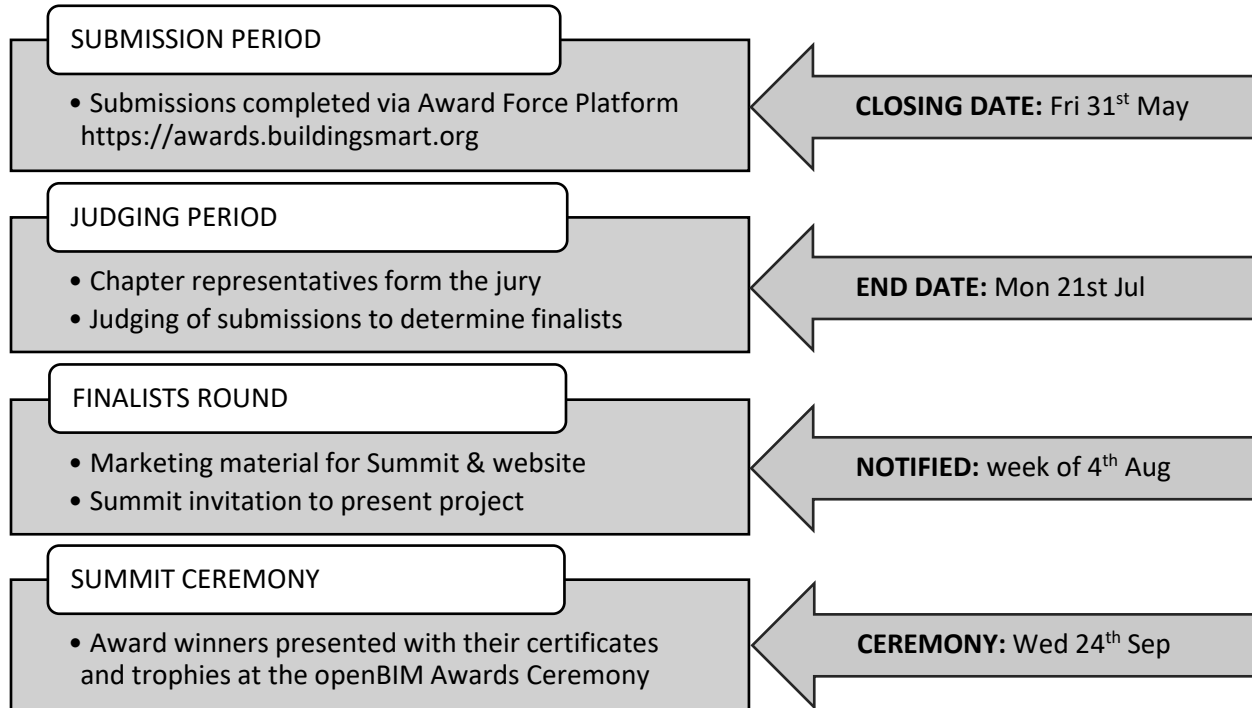
1. Entries must demonstrate, with evidence, the use of one or more of buildingSMART's openBIM methods.
2. Entries must be delivered in International English; the jury will not be able to assess content written in any language other than International English.
3. One submission = one project.
4. One project can be submitted to multiple award categories, provided it meets the criteria for each category. When submitting a project for multiple awards, it is expected that each submission be tailored to each category's scope.
5. There is no limit to the number of submissions an individual/company can submit.
6. Past submissions that did not win an award in previous seasons are permitted to resubmit to any new season. Past award winners are not eligible for resubmission in the same category but may submit to other categories.
7. It is a requirement for applicants to submit IFC model files and/or any other technical file formats as evidence of the claims of the submission.

## SHARING & CONFIDENTIALITY AGREEMENTS

buildingSMART International reserves the right to promote all submissions publicly. This may include, but is not limited to: publication of the winners, finalists, and special mentions in galleries on bSI's website, as individual case studies, and in the annual openBIM Awards Yearbook. The exception to this is any model or other technical file(s) submitted, which will not be shared publicly unless express consent has been granted on a case-by-case basis.

## KEY DATES

All dates referenced are open until 23:59 in the last time zone available worldwide. Please refer to the website for any changes to the closing dates published here. If there is a discrepancy between the dates in this guide and that of the website, the dates on the website shall take precedence.



## COMPLETING AN ENTRY

<https://awards.buildingsmart.org>

Award Force is a web-based awards platform used by buildingSMART International for the openBIM Awards, and it does not cost anything for applicants to use.

Before entering the site, you will need to create an account or log in if you are already registered. Once logged in, you will need to choose the category you wish to submit to and follow the instructions as they appear in the tabs. Be sure to take note of your login credentials to use every time you log in to the platform. You can save your submission and return to it as many times as you need.

**IMPORTANT NOTE:** You must click “SUBMIT” before the submission deadline to successfully enter the program. Entries that are saved but not officially submitted are considered “In Progress” and are



not counted as an official submission. An entry cannot be submitted until all the required fields are completed.

Once an entry has been successfully submitted, you will receive an automated email confirmation from Award Force.

## TAILORED CATEGORY APPROACH

Note that there is a tailored approach for the submission mean - depending on which category you choose, you will be presented with different submission tabs to complete.

## SOFTWARE ECOSYSTEM

Submitters are to create a graphic or map that demonstrates all software used, by which stakeholder, which IT infrastructure, in which project phase or information exchange or BIM use. Identify where openBIM methods and/or concepts aided the outcome.

## PROCESS MAPS

Applicants are asked to include process maps in their submission, in addition to what is provided as a Software Ecosystem Map. The choice of the format and design is at the applicants' discretion.

## ADDITIONAL EVIDENCE

Screenshots, video screen captures, and other forms of documentation are also highly encouraged throughout the submission documentation to show clear software workflows and model or data content.

## IFC FILE VIEWER FOR JURY REVIEW

It is a requirement for applicants to submit a URL link to IFC model files [UPLOADED TO A FREE VIEWER TOOL\\*](#) as evidence of the claims of the submission.

Applicants must upload the files to a web-based viewing platform with the following requirements:

- Online upload and visualization (with a browser) not only of IFC models but also of other supported formats such as BCF, Point Clouds, PDF, DXF, DWG, etc.



- Ability to query data of model elements
- Publicly accessible link - the user will upload the model, create a public link, and give access to 'everyone'. Those with this link will be able to view the content, but will not need to download it
- Uses an encrypted connection for upload
- User profile protected with username/password

The jury must be able to click on the link to the viewer and review the content without having to download any application or files. The choice of platform for this is entirely up to the submitter. Contact [awards@buildingsmart.org](mailto:awards@buildingsmart.org) if your organization has secure information handling requirements that need to be met.

*\*Should submitters not have a preferred platform to do this, ACCA software has made available their browser-based file viewer for upload and visualization tailored specifically for the bSI openBIM Awards Program.*

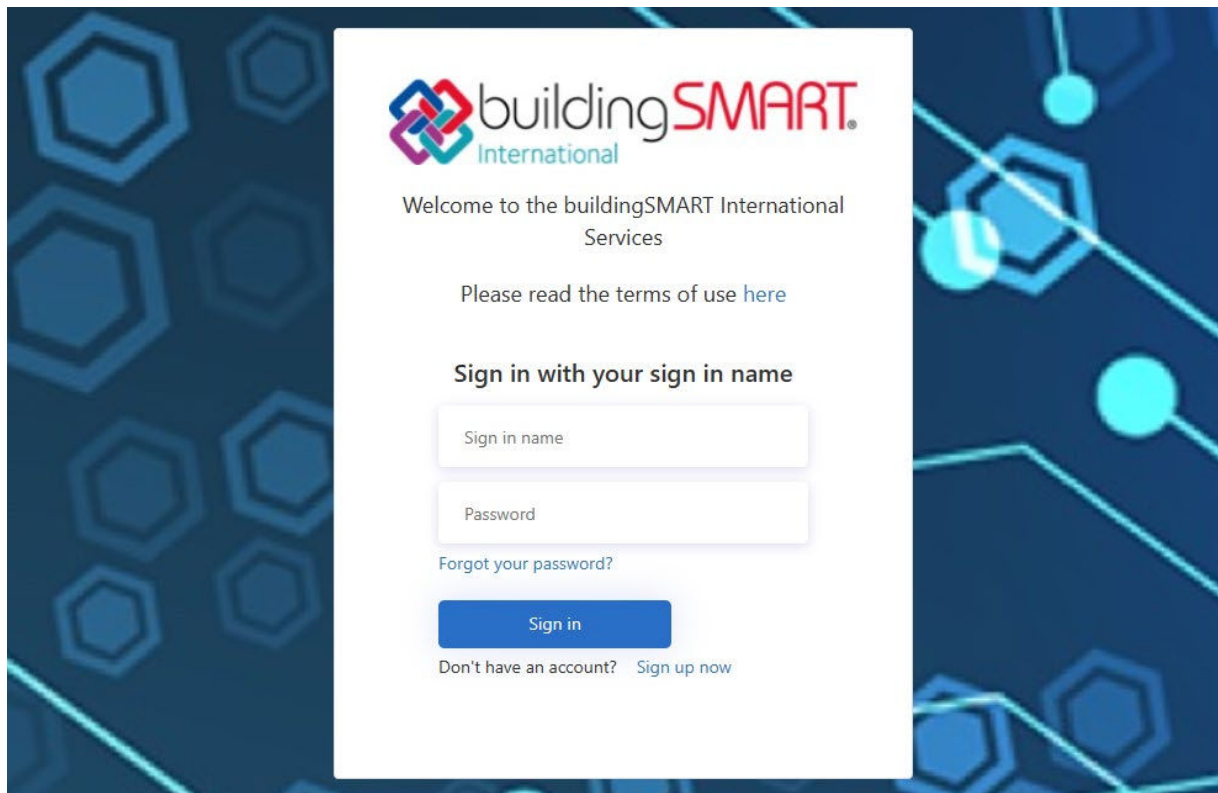
The ACCA viewer is free to use, utilizes an encrypted connection for upload, is username and password protected, and supports several file formats including IFC, BCF, Cloud Points, PDF, DXF, and DWG. Once the upload of file(s) is complete, you will be able to generate a publicly accessible link. A field within the submission exists to paste the link and will be used by the jury to analyse the uploaded files.

The viewer can be accessed by using the following links:

- Access the service webpage and use it from [this link](#)
- Video with the test instructions for sharing the models is at [this link](#)

## bSI VALIDATION SERVICE

<http://validate.buildingsmart.org>



If you don't already have an account, you can sign up and create one for free.

The bSI Validation Service does not visualize the data. It checks if the data is valid against the specification (and bSDD). In this way, it is more like a 'diagnostics' on an IFC file\*. When the jury wants to 'see' the file and view the properties etc, the Validation Service does not work as a replacement for ACCA's file viewer, or other file viewers (see the section above).

bSI's Technical Team will run all submissions through the validation service automatically and provide the reports to the jury. However, submitters are encouraged to try the service themselves and understand what the jury will be reviewing as technical evidence in the submission. Keep in mind that there are errors in almost every file, and so submitters shouldn't be scared off by this.

This service is in the 'public beta' version. Feedback is welcome. For any questions, troubleshooting, or to provide feedback on this service, please reach out to [validate@buildingsmart.org](mailto:validate@buildingsmart.org).

*\*Submitters can contact [awards@buildingsmart.org](mailto:awards@buildingsmart.org) to request a Box link to which they can upload their IFC file(s) for the Technical Team to use in the Validation Service and publish the report.*

## USE CASES

We continue to encourage documentation of any BIM Use Case deployed on the project. Although there is no requirement to complete a specific deliverable at this time, use case excellence could be awarded at the discretion of the jury or executive.

For more information on the bSI UCM activity, visit <https://www.buildingsmart.org/users/services/>



<https://ucm.buildingsmart.org>

## VIEWS AVAILABLE OF PAST ENTRIES

Submitters can review past winners and special mentions on bSI's website, specifically at:

<https://www.buildingsmart.org/past-openbim-awards/>

Submitters are encouraged to review past entries for examples of required documentation, such as Software Ecosystem Maps, Process Maps, Data Metrics, etc.

## PLAGIARISM

Plagiarism is strictly forbidden and will result in immediate disqualification.

## RESUBMISSION OF PAST PROJECTS

buildingSMART encourages the resubmission of projects to the awards program. In some cases, the past submission may not have fully demonstrated the accomplishments, or the project may have further advanced since the time of the last submission. Please note that previous winning projects are eligible to submit to different or new categories, but not to resubmit to the same category in which they won an award.

## JURY PROCESS

buildingSMART is committed to a fair and transparent judging process. The Jury is formed on a volunteer basis from each of the buildingSMART Chapters around the world. Each jury member attests to not being involved with any submission or any of the projects being submitted. The jury is given the tools and background knowledge to be able to complete the judging activities fairly and consistently across all submissions. The scores from the jury will determine the finalists in each category.

## FINALISTS

All finalists will be asked to provide additional materials to be promoted by buildingSMART, which may include, for example, videos, photos, and quotes. Finalists will also be required to prepare a final presentation (usually 15-20 minutes in length) to be presented at the Autumn Summit to an elite jury. Winners will be announced at the Awards Ceremony during the buildingSMART International Autumn Summit.

## AWARDS CEREMONY

The Awards Ceremony is the event where all winners are announced. It occurs annually during the Autumn Summit. All submitters are invited to attend, regardless of final standing in the awards.

## CONTACT

Submitters may contact [awards@buildingsmart.org](mailto:awards@buildingsmart.org) with questions at any time.

## FREQUENTLY ASKED QUESTIONS

Submitters are encouraged to review the FAQ section on the awards webpage.

## OPT-IN TO BSI NEWS

Opt-in to the buildingSMART mailing list to receive all bSI news and regular communications:  
<https://share.hsforms.com/1Lt8Rj8QWSz2FdJl6wMwqRQ2wx5h>

## APPENDIX A: MESSAGE TO APPLICANTS

Thank you for your interest in submitting a project to the buildingSMART International (bSI) openBIM Awards. buildingSMART created the Award program to recognize exemplary projects that have used buildingSMART solutions to effectively overcome interoperability challenges. The first awards were presented in Toronto in October 2014.

To ensure your project has the greatest chance of winning an award, read carefully as we provide you with instructions and information about the submittal process. It is important to follow these instructions to present your submission in the clearest way possible to the jury.

The submissions will be judged on how well the evidence demonstrates the use of openBIM and open information exchanges on the project, with highest ratings going to projects showcasing the use of bSI Standards, Tools, and Services. The submitters are required to provide technical evidence.

From experience, we have found the competition to be very intense. buildingSMART ensures a fair competition by combining rigor and transparency in the submittal process and enabling the jurors to give all parties equal consideration. To this end, the evidence given must follow the instructions and contain information that clearly demonstrates openBIM in the submission.

We recognize the time required to prepare a proper award submission, and our aim is to make the process as easy as possible. Concurrently, we respect the jury members' time to thoroughly review each submission in a consistent method to make their best assessment. The more succinct and organized the evidence is in supporting the submission, the better the process is for everyone.

**BEWARE:** Copious, non-relevant, or insufficient information will be viewed as detrimental. The jury has a limited amount of time to review submissions. Ensure important information is explicit and not buried in large amounts of text. **Do not duplicate text in multiple fields.**

**IMPORTANT REMINDER:** All communications from buildingSMART International regarding your submission will be sent only to the contact person provided in your award application. If you need to change the contact, please send your request to [awards@buildingsmart.org](mailto:awards@buildingsmart.org)

Best of luck,

bSI Awards Management Team

## APPENDIX B: AWARD CATEGORY DEFINITIONS

CATEGORY	
Construction for Buildings	Projects that exemplify the effective use of openBIM during the construction phase of building projects.
Construction for Infrastructure	Projects demonstrating the successful implementation of openBIM in the construction phase of infrastructure projects.
Design for Buildings	Projects showcasing exceptional use of openBIM during the design phase of building projects.
Design for Infrastructure	Projects highlighting innovative application of openBIM in the design phase of infrastructure projects.
Operations	Projects that excel in using openBIM for the handover, facilities management, and/or asset management during the operations phase.
Professional Research	Research led by academic, industry, or government professionals that contributes to the advancement of openBIM.
Student Research	Research conducted by students that explores innovative applications of openBIM.
Sustainability Excellence	Projects that achieve better social, environmental, and economic outcomes through the use of openBIM.
Technology	Applied technology solutions developed using buildingSMART schemas that enhance interoperability and data workflows.

## APPENDIX C: SAMPLE ATTACHMENT FILES

Below are some examples from past submissions to help give ideas on how to support the submission with the kinds of attached documents we are asking you to provide. Please remember that plagiarism is a serious offence and is not tolerated in this program. You can view other submission examples through the Award Force “Gallery” viewer, as well as on the bSI website.

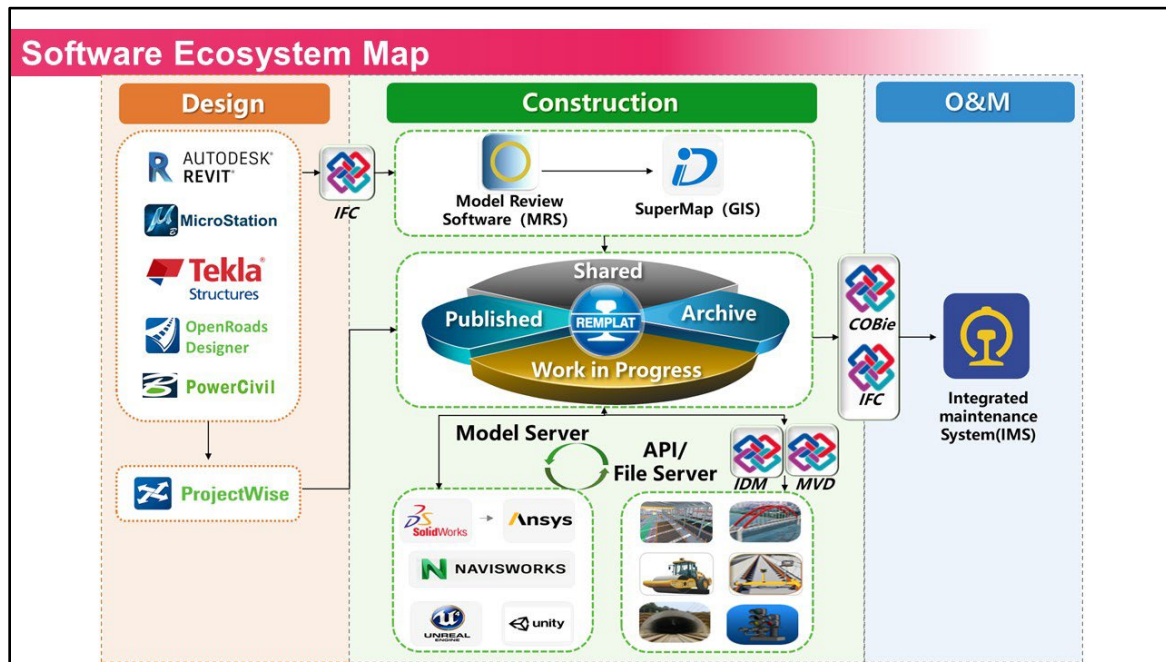


Figure 1: Software Ecosystem Map – Beijing-Zhangjiakou high speed railway, China



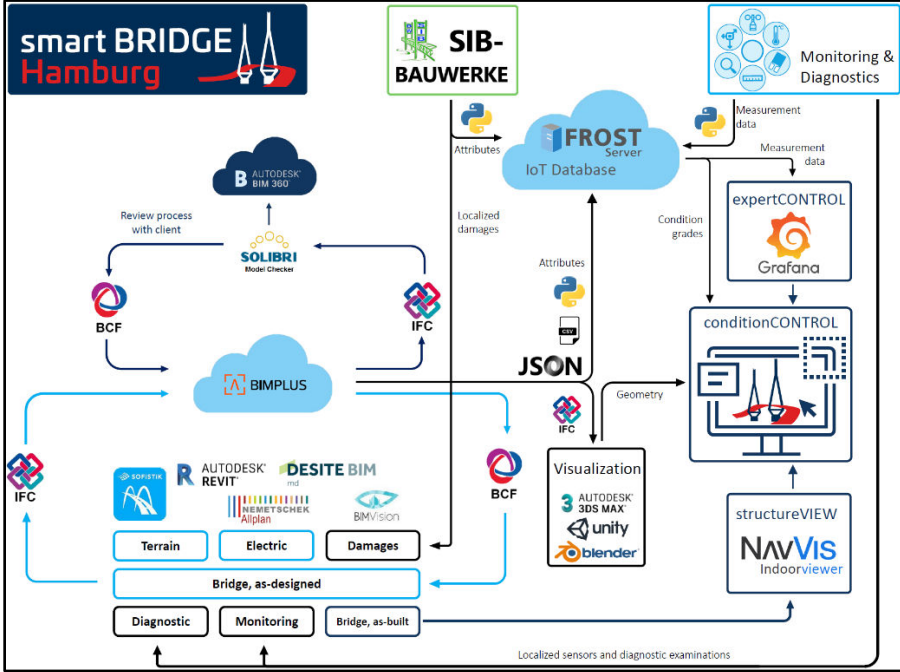


Figure 2: Software Ecosystem Map - smartBRIDGE Hamburg, Germany

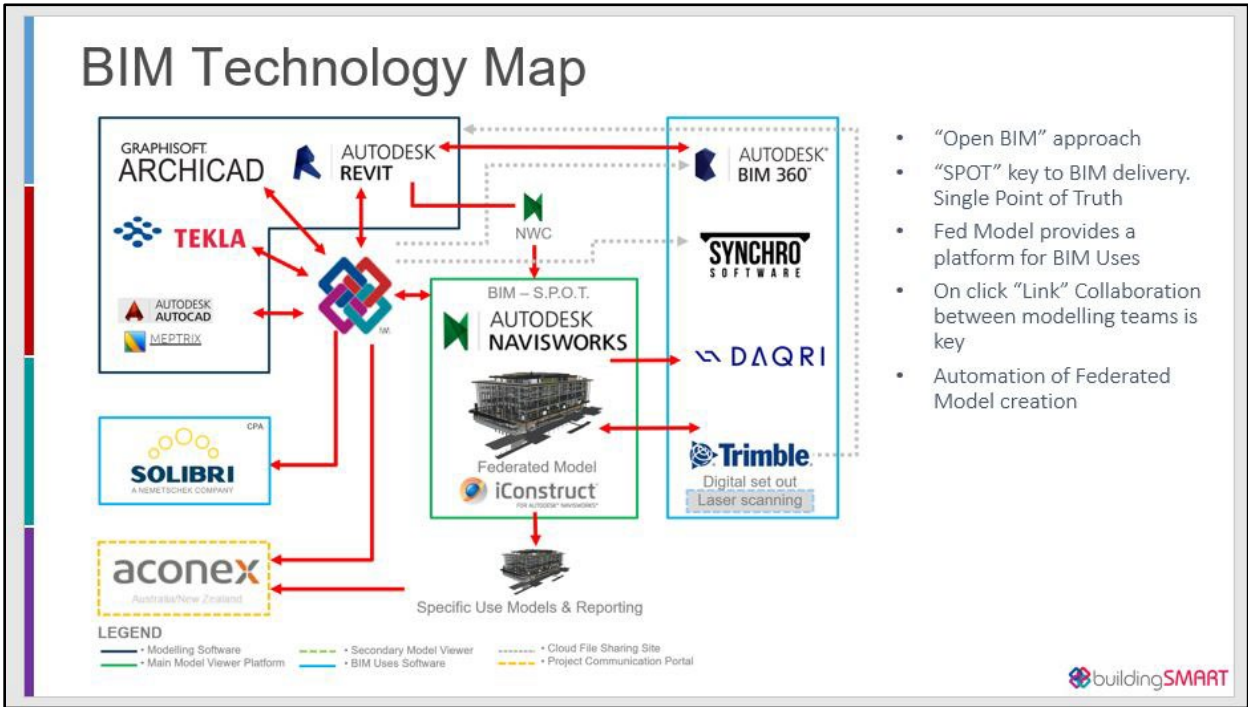


Figure 3: BIM Technology Map – Mercedes Autohaus Project, Australia

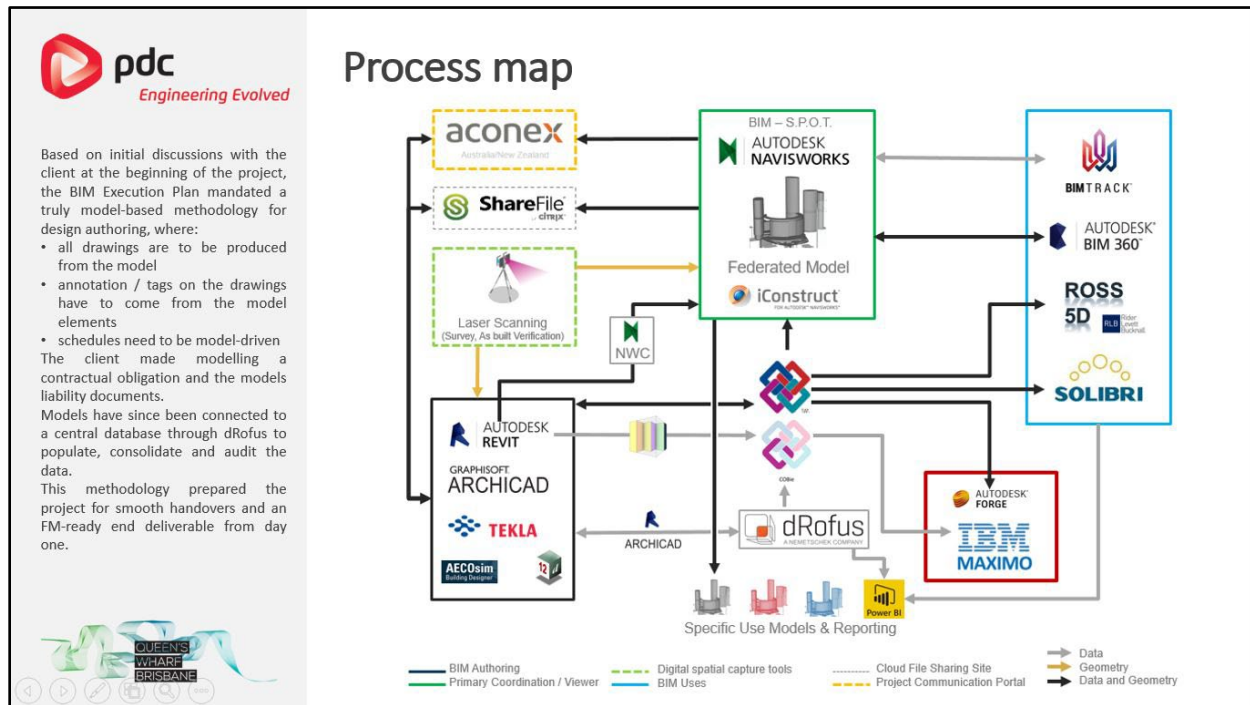


Figure 4: Process Map – Queen's Wharf Brisbane Project - Australia

## Project general information

- Project BIM Uses

Project BIM use / Description	Stage	Tool	Delivery format
Design Authoring and Drawing Production	Stage 1	ARCH Rhino (T1), Revit (T2)	JPEG(T1) IFC, RVT, DWG, PDF, NWD (T2)
		STR Revit	IFC, RVT, DWG, PDF, NWD
		MEP Revit	IFC, RVT, DWG, PDF, NWD
	Stage 2	CIVIL Civil 3D	IFC, RVT, DWG, PDF, NWD
		ARCH Revit	IFC, RVT, DWG, PDF, NWD
		STR Revit	IFC, RVT, DWG, PDF, NWD
Sun & shade analysis	Stage 1 T1, T2	Ecotect	JPEG
Clash Detection	Stage 1 T2, T3, T4 Stage 2 T1, T2, T3	Navisworks	NWD, PDF
BIM Model for Tender Documents	Stage 1 T4	ARCH Revit	IFC, RVT, PDF, DWG, NWD
	Stage 2 T3	STR Revit	IFC, RVT, PDF, DWG, NWD
	Stage 2 T3	MEP Revit	IFC, RVT, PDF, DWG, NWD
4D Sequencing	Stage 1 T2, T3 Stage 2 T1, T2	Navisworks	NWD, AVI
Animation	Stage 1 T1, T2 Stage 2 T1, T2	Twinmotion	AVI
Scheduling for BOQs	Stage 1 T2&3 T4 Stage 2 T1, T2, T3	Revit	RVT

**Stage 1 T1**  
: Land Use Master Plan Review and Concept Design

**Stage 1 Task 2**  
: Building Architecture and Engineering Schematic Design

**Stage 1 Task 3**  
: Infrastructure Schematic Design

**Stage 1 Task 4** : D&B Tender Documents

**Stage 2 Task 1**  
: Detailed Design Development

**Stage 2 Task 2** : Final Design

**Stage 2 Task 3**  
: Pre-Construction Contract Stage

Figure 5: Project BIM Uses – Qatar TOD Project, Qatar TOD

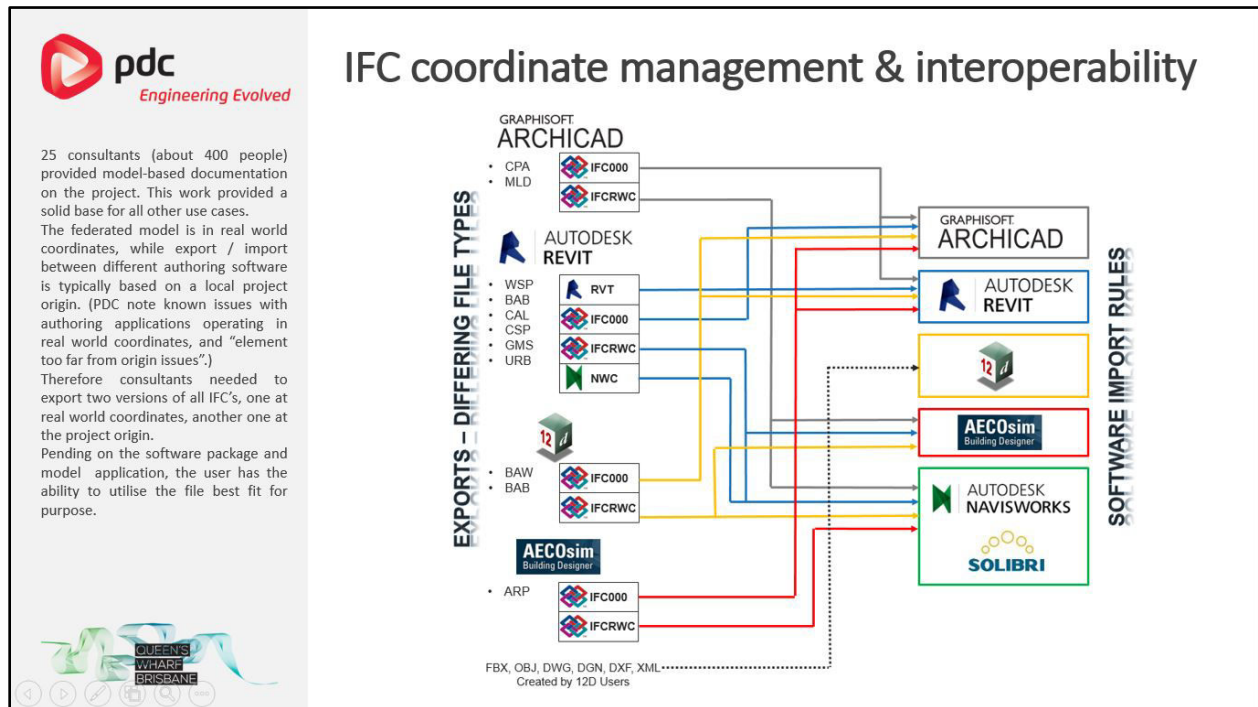


Figure 6: IFC coordinate management & interoperability – Queen's Wharf Brisbane Project – Australia

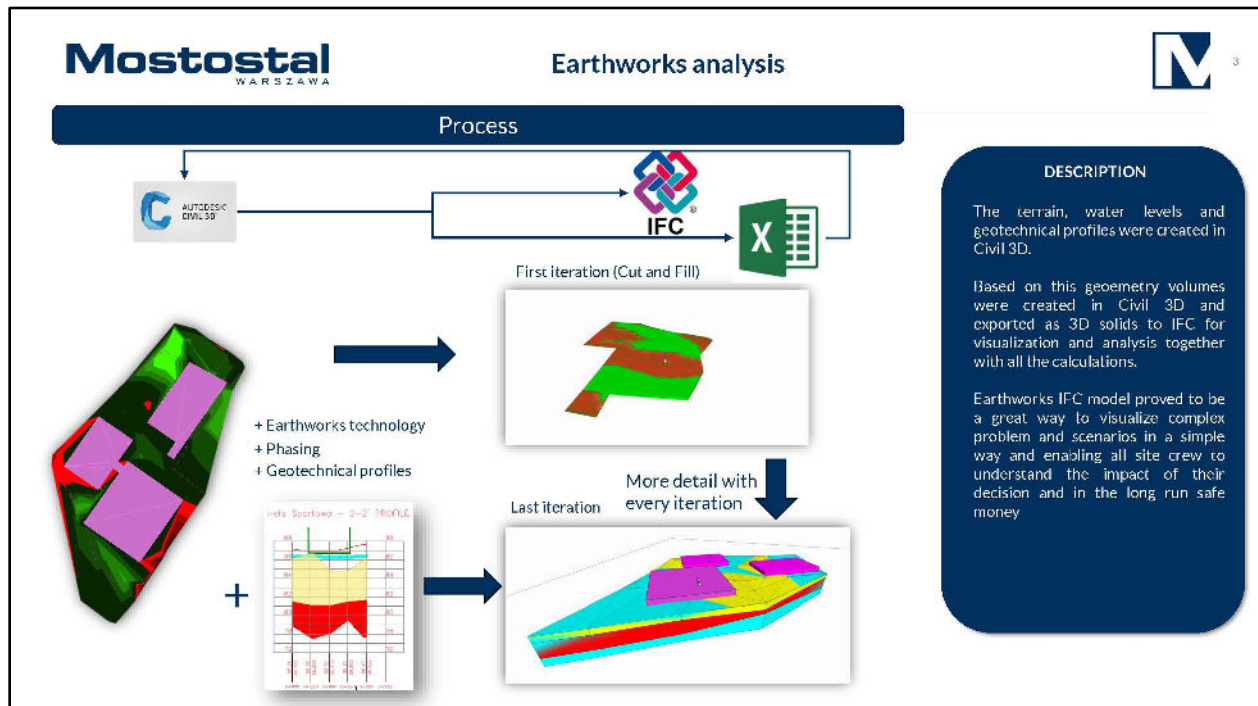


Figure 7: Earthworks analysis – Primary school in Warsaw, Poland

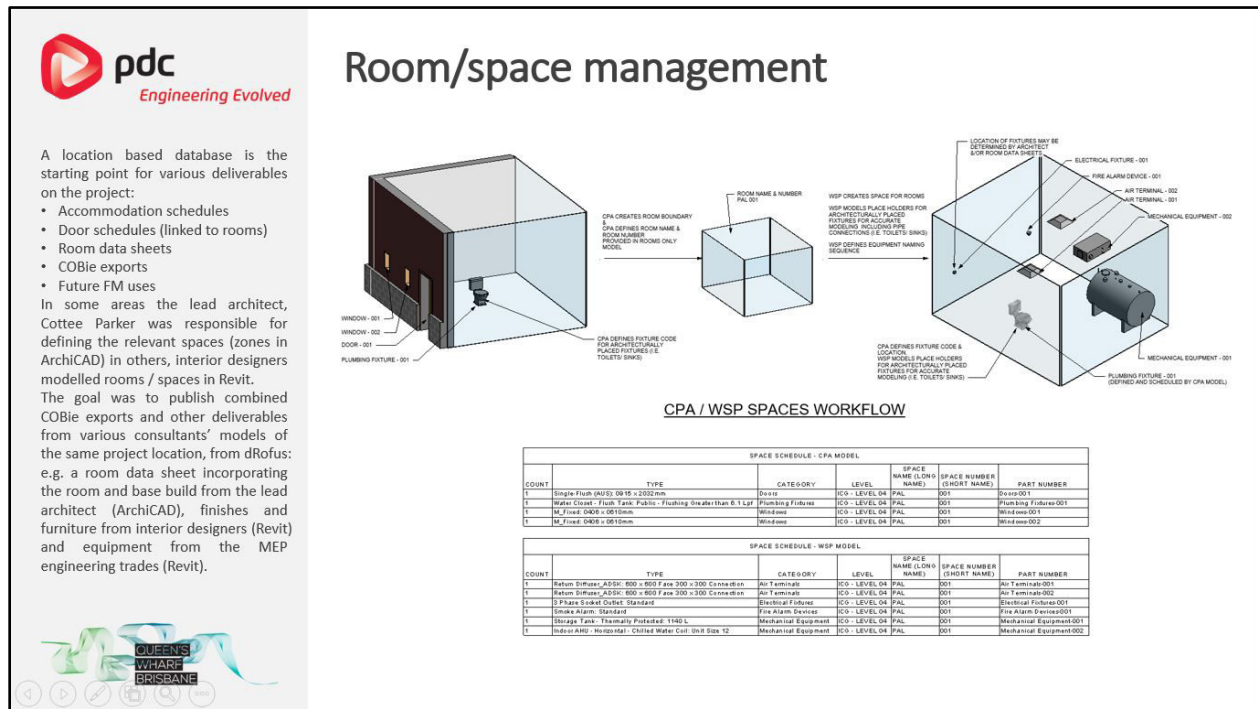


Figure 8: Room/space management – Queen’s Wharf Brisbane Project - Australia

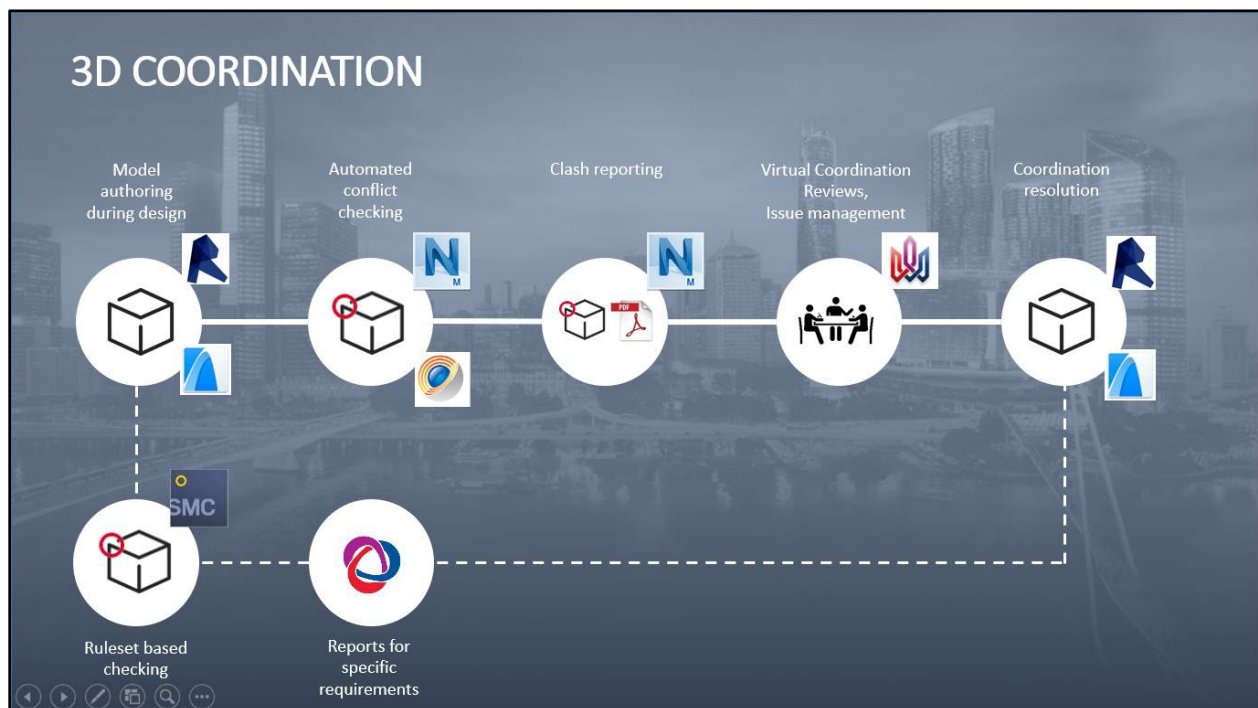


Figure 9: 3D Coordination – Queen’s Wharf Brisbane Project - Australia



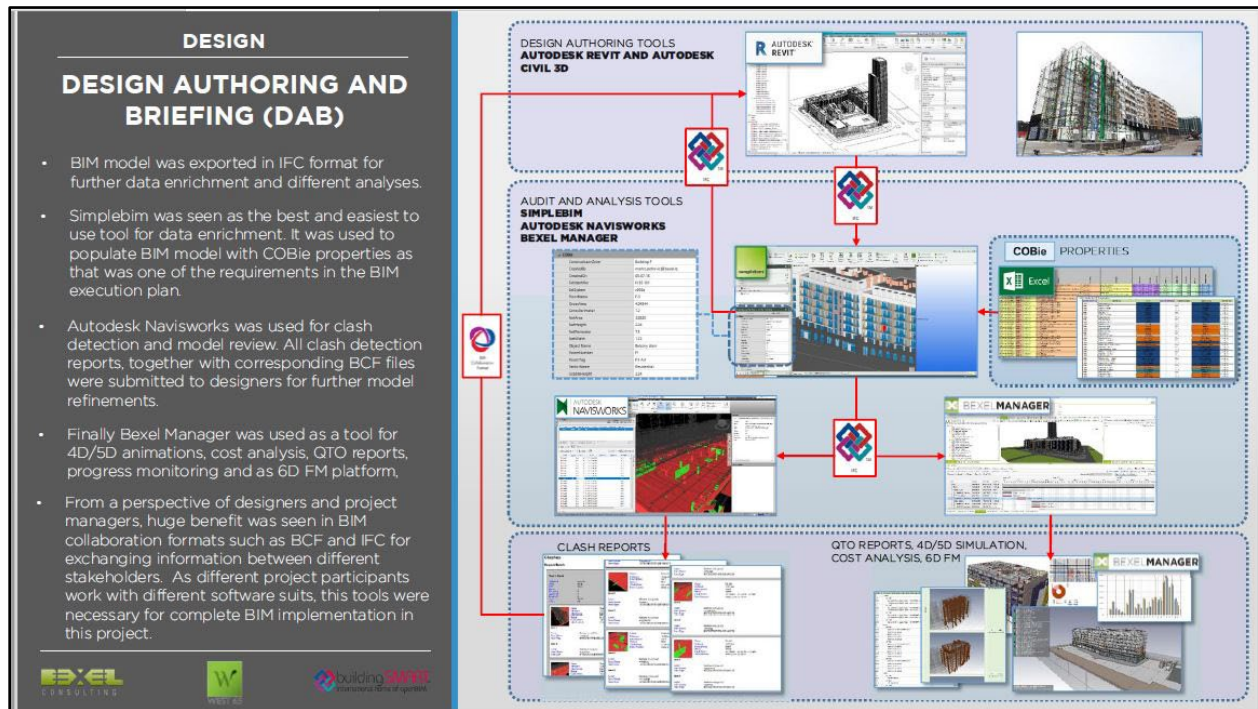


Figure 10: Design Authoring and Briefing – West 65 Project, Serbia

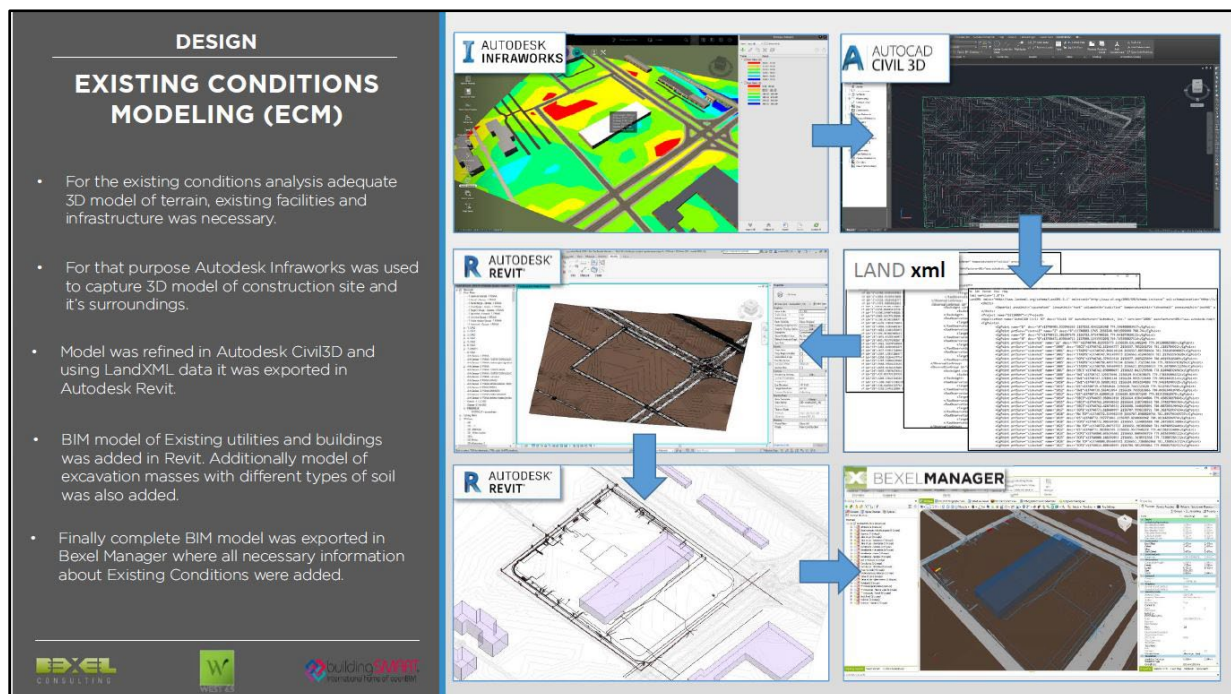


Figure 11: Existing Conditions Modeling – West 65 Project, Serbia

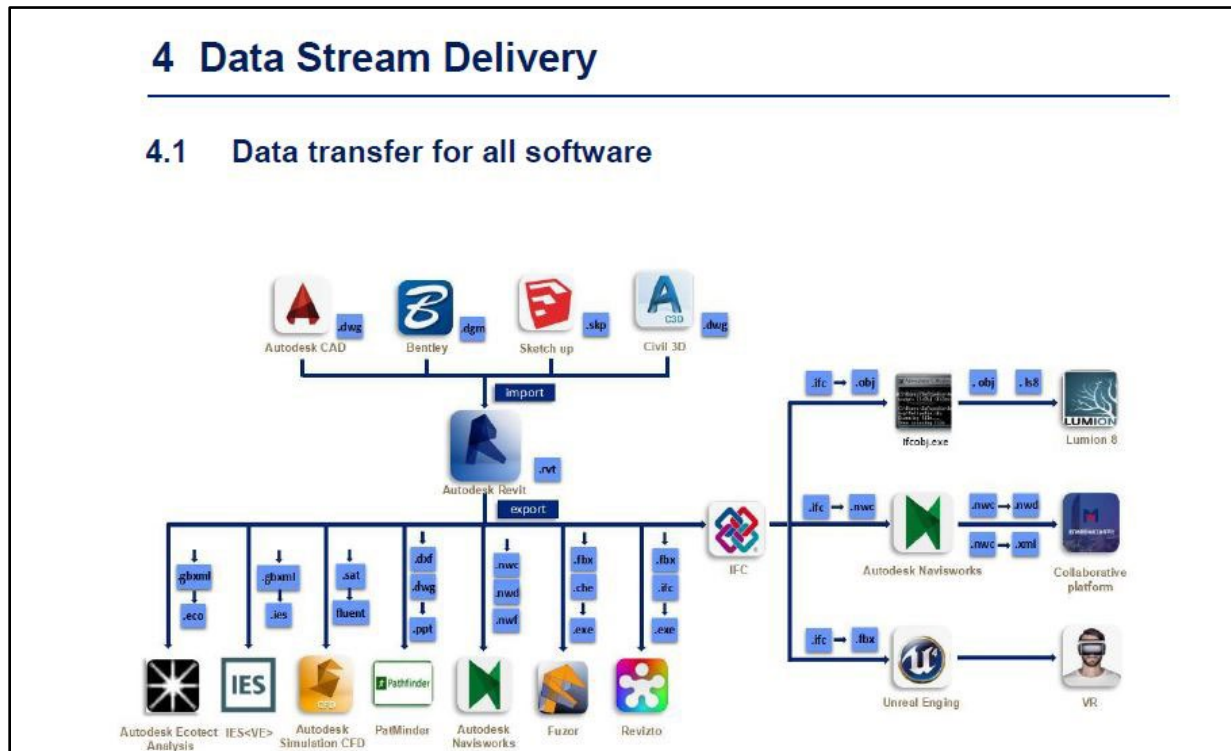


Figure 12: Data Stream Delivery – Xiamen Metro Transit Project, China